

## Past Community Agency Partners

### Fall 2011

CASA for Douglas County  
College of Saint Mary  
Community Alliance  
Heartland Family Service  
Lutheran Family Services, Bellevue, NE  
Munroe-Meyer Institute  
Southwest Iowa Families, Clarinda, IA

### Fall 2010

AseraCare  
Camp Carol Joy Holling, Ashland, NE  
Community Alliance  
Community Action Partnership, Lincoln, NE  
Friendship Home, Lincoln, NE  
Lincoln Regional Center, Lincoln, NE  
Nebraska Children and Families Foundation, Lincoln, NE  
Nebraska Domestic Violence Coalition, Auburn, NE  
Salvation Army  
Sanford Health, Sioux Falls, SD  
Telecare Corporation, Bellevue, NE  
VA Health Systems  
Youth Rehabilitation and Treatment Center, Geneva, NE

### Fall 2009

Adoption Links Worldwide  
Eastern Nebraska Community Action Partnership  
Heartland Family Service, Council Bluffs, IA  
Child Advocacy Center, Lincoln, NE  
Nebraska AIDS Project  
Nebraska Urban Indian Health Coalition  
Region 6 Behavioral Health  
Salvation Army

### Fall 2008

Alegent Health,  
Catholic Charities, Lincoln, NE  
Friendship Program, Inc.  
Heartland Family Service, NE and IA  
Iowa United Methodist Church, Indianola, IA  
Lutheran Family Services  
Omaha Home for Boys

Royale Oaks Assisted Living

### Fall 2007

Cedars Youth Services, Lincoln, NE  
Charles Drew Health Center  
Christ Child Society  
Goodwill Industries  
North Omaha Good News Bears  
Omaha Veterans Admin. Medical Center  
OMNI Behavioral Health  
Santa Monica

### Fall 2005

(upon request)

(in Omaha, NE unless indicated otherwise)

*Number of partnerships each semester depends on number of students enrolled.*

*[Student] worked closely with our program to figure out duplications in statistics, modernize our internal processes, and allowed us to look at outcomes in a different light. . . . She brought a level of excitement to our team. We enjoyed working with her and her assistance has expanded our way of capturing data. This was a HUGE assistance.*

*- Heartland Family Service*

### ***To participate, contact:***

Jeanette Harder, PhD, Associate Professor  
University of Nebraska at Omaha  
Grace Abbott School of Social Work  
E-mail: [jharder@unomaha.edu](mailto:jharder@unomaha.edu)  
Phone: 402-554-2893  
Website: [www.TakeTheNextSteps.org](http://www.TakeTheNextSteps.org)

12-15-2011

## ***PROGRAM EVALUATION***

### **COMMUNITY AGENCIES AND GRADUATE SOCIAL WORK STUDENTS**

University of Nebraska at Omaha  
Grace Abbott School of Social Work  
Jeanette Harder, PhD, Associate Professor  
Website: [www.TakeTheNextSteps.org](http://www.TakeTheNextSteps.org)



### ***Program Evaluation:***

Graduate social work students learn and apply knowledge and skills in program evaluation, and Community agencies receive needed program evaluation services, free of charge.

*Community agencies know that program evaluation is integral to the provision of quality and ethical services to clients, and to the receiving of funding. However, in-depth program evaluation is beyond the capacity of many community agencies.*

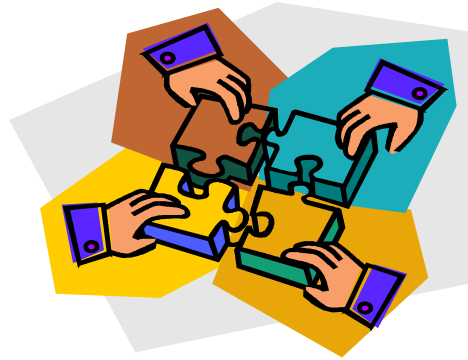
*Graduate social work students welcome the opportunity to learn and apply their knowledge and skills in program evaluation and to provide needed services to community agencies. When facilitated by an experienced and skilled research instructor, community agencies and students can benefit from a collaborative venture.*

### **Expectations of Community Agencies**

1. Provide information on the agency and program, and copies of program forms and outcome tools.
2. Provide sufficient, de-identified data for statistical analysis in Excel format: minimum of 40 cases with data on demographics, service provision and outcomes.
3. Participate in four face-to-face contacts with students; additional contacts by E-mail, phone, or face-to-face, as needed.

### **Community Agencies Gain:**

1. Valuable program evaluation services, at no charge, including an analysis of existing data, a literature review, a logic model, and recommendations.
2. Written evaluation reports, prepared by graduate-level social work students, that can be used to document and improve service delivery and for grant writing.
3. Exposure to graduate-level social work students.



### **Students Gain:**

1. Opportunity to learn and apply knowledge and skills through “service learning” in the course: SOWK 8940 Evaluation of Social Programs.
2. Exposure to community agencies and services provided by them.
3. Opportunity to provide a vital service to a community agency.

### **Overview of Student Assignments**

(PE = Program Evaluation assignment)

- PE#1 Selecting program to evaluate
- PE#2 Statement of the social problem addressed by the program
- PE#3 Review of the professional literature
- PE#4 Process evaluation
- PE#5 Outcome evaluation
- PE#6 Statistical findings
- PE#7 Presentation to community partner
- PE#8 Final program evaluation report

### **Final Product:**

Oral presentation and written papers by graduate social work students which include:

- Abstract
- Definition and prevalence of social problem/issue addressed by the program
- Literature review
- Process Evaluation
- Outcome evaluation
- Statistical findings
- Discussion, with recommendations